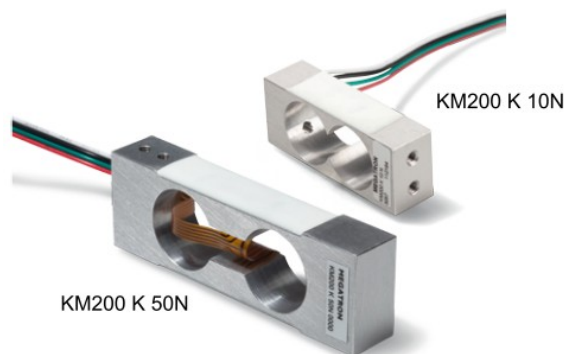


SERIES KM200

COMPACT SHEAR BEAM

GENERAL SPECIFICATION

- Series KM200 force sensors are double bending beam sensors and characterized by its tight shape and its easy way of fastening,
- Protection IP65



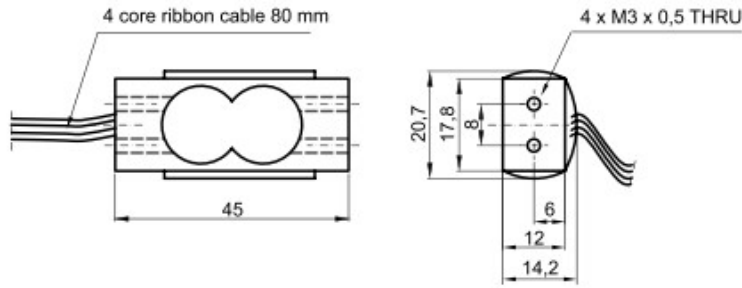
- Compact shear beam
- Strain gauge
- Measuring body aluminium
- IP65 protection
- Calibration including measurement data
- Analogue amplifier not included

Data load cell

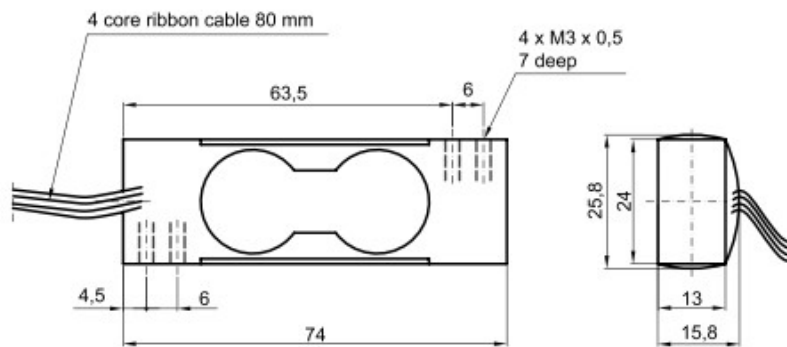
	10N	50N
Rated force		
Rated characteristic value	0,6 mV / V of rated output	1,2 mV / V of rated output
Relative error of characteristic value	≤ 10 % of rated output	
Relative repeatability error	≤ 0.05 % of rated output	≤ 0.03 % of rated output
Relative reversibility error	≤ 0.05 % of rated output	≤ 0.03 % of rated output
Relative linearity error	≤ 0.05 % of rated output	≤ 0.03 % of rated output
Relative deviation of zero signal	≤ 3 % of rated output	
Input resistance	350 ±3Ω	410 ±5Ω
Output resistance	350 ±3Ω	
Insulation resistance	≥ 5 GΩ @ 50 VDC	
Rated range of excitation voltage	10 V DC / AC	
Operating range of excitation voltage	≤15 V DC / AC	
Rated temperature range	-10 °C .. +70 °C	
Operating temperature range	-10 °C .. +40 °C	
Protection	IP 65	
Temperature effect on characteristic value	≤ 0,3 % rated output / 10K	≤ 0,03 % rated output / 10K
Temperature effect on zero signal	≤ 0,3 % rated output / 10K	≤ 0,03 % rated output / 10K
Creep under load	≤ 0,05 % rated output	≤ 0,03 % rated output
Cable dimension	4 x AWG30	4 x AWG28
Cable length from body	Approx 80 mm	
Body material	Aluminium	
Mass	Approx 15g	Approx 40 gr

DRAWING

KM200 10N



KM200 50N

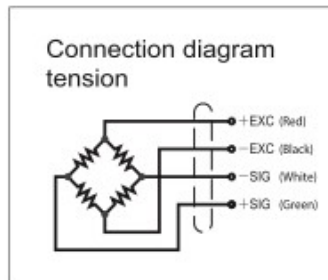


Cable assignment

For tension:
 Red: +input
 Black: -input
 Green: +output
 White: -output

For pressure:
 Red: +input
 Black: -input
 Green: -output
 White: +output

Dimensions in mm



Order code			
Series	KM200		
Connecting cable 80 mm		K	
Rated force:			10KN 50KN

sf_KM200_2407_e01 - Document & product can be modified without notice.



ANDIG S.A.R.L
 451, route des Blaves
 74200 ALLINGES
<https://www.andig.fr>

Tél : +33 (0)4 50 70 54 54
 Fax : +33 (0)4 50 70 56 56
 Email : info@andig.fr