

# SERIES KM801

## COMPACT SHEAR BEAM



### GENERAL SPECIFICATION

- Series KM801 force sensors are easy to install. They can be fixed with 2 screws at any flat and stable ground. Thanks to their compact dimensions, the force sensors are a good choice even in tight installation conditions.
- Application examples: Measurement of forces in assembly processes in automation, control of motion sequences in medical systems.

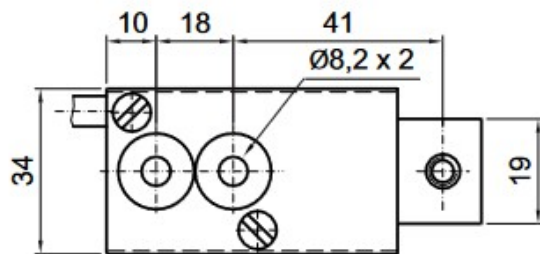
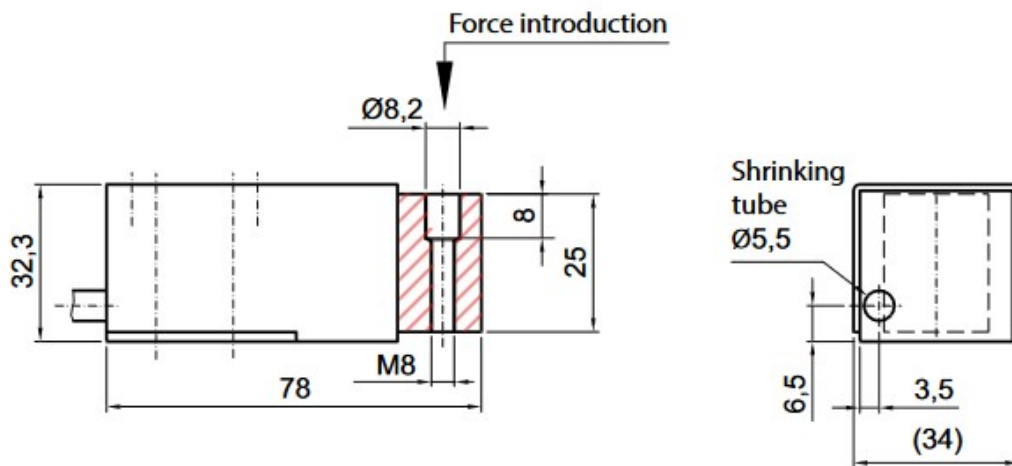
- Strain gauge full bridge
- Compact shear beam
- 2 Measuring ranges: up to 2 kN, 5 kN
- Force transmission via M8-thread

KM801 Specifications		
Rated force (F <sub>nom.</sub> )	2KN	5KN
Maximum operating force	≤ 150 % of rated force (F <sub>nom.</sub> )	
Rated characteristic value	2,0 ± 0,2 mV/V @ F <sub>nom.</sub>	
Excitation voltage	10 V DC / AC (max. 15 V DC / AC)	
Relative linearity error	≤ 0,05 % F <sub>nom.</sub>	
Hysteresis	≤ 0,05 % F <sub>nom.</sub>	
Relative repeatability error	≤ 0,05 % F <sub>nom.</sub>	
Relative deviation of zero signal	≤ 1% F <sub>nom.</sub>	
Relative creep (30min.)	≤ 0,05 % F <sub>nom.</sub>	
Rated displacement	≤ 0,3 mm @ F <sub>nom.</sub>	
Temperature effect on characteristic value	≤ 0,05 % F <sub>nom.</sub> / 10 K	
Temperature effect on zero signal	≤ 0,05 % F <sub>nom.</sub> / 10 K	
Rated temperature range	-10 °C .. +40 °C	
Operating temperature range	-10 °C .. +70 °C	
Input resistance	387 ±20Ω	
Output resistance	350 ±3Ω	
Insulation resistance	≥ 5 GΩ @ 50 V DC	
Protection	IP40	
Cable length / diameter	ca. 1,75 m / Ø 4,6 mm	
Electrical connection	4 x AWG26	
Material body / Housing	Nickel-plated steel alloy / Steel with paint finish	
Mass	ca. 390 g	

Order code			
Series	KM801		
Cable 1m75		K	
Rated force			2KN 5KN

**Accessories (not included)**  
**Measuring amplifier IMA2 DMS**

**DRAWING :**



Dimensions in mm

Cable assignment	
For pressure:	
Brown:	+input
Yellow:	-input
Green:	+output
White:	-output
For tension:	
Brown:	+input
Yellow:	-input
Green:	-output
White:	+output

