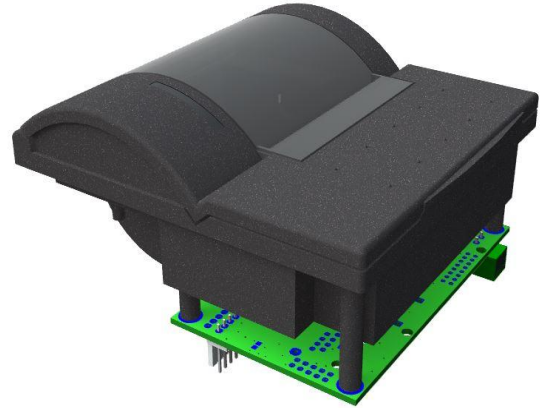


MRSi-x500

MRTi-x500

DOT MATRIX PRINTER PLASTIC HOUSING



MRxi-500 printers family is a complete solution, integrating a print head and paper roll holder inside a small compact plastic case with transparent window. The associated electronics is mounted at the rear of the housing, allowing an easy access to the connectors during the installation.

This printer is recommended for traceability applications where cost is more important than print speed.

Available with rear protective cover

SPECIFICATIONS

- Low integration depth
- Paper feed led indicator
- 2k buffer, 8k logo
- Configuration by menu or interface
- Graphic mode : MRS, Epson 9 needles, PCL Raw
- Many enhanced print modes (underline, upside down ...)
- Real time clock (optional)
- Hexa decimal dump
- Datalogger: Print of pre-stored messages by TTL inputs or internal timer.
- Automatic time stamping (optional)
- 1 input for counter mode and 1 analog input.
- Graphic data logger : curves can be printed like an analog recorder using analog input.

APPLICATIONS

- Ticket
- Instrumentation
- Medical systems
- Industrial controls
- Datalogger

- 4 or 8 needles : 144, 192 or 240 dots/line
- 58 mm paper width
- 5 VDC, 9-40 VDC or mains power supply
- TTL, V24, USB, RS422, Ethernet, Modbus
- Black plastic housing with window

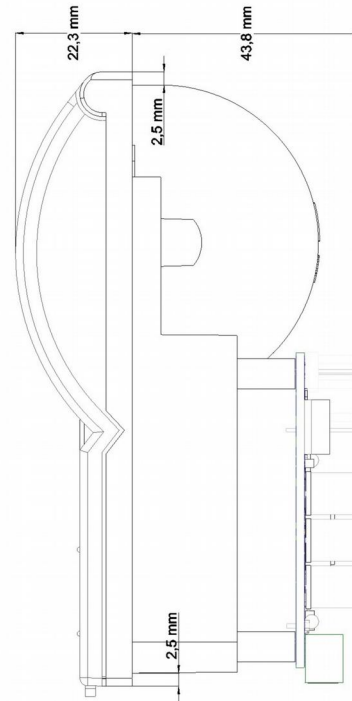
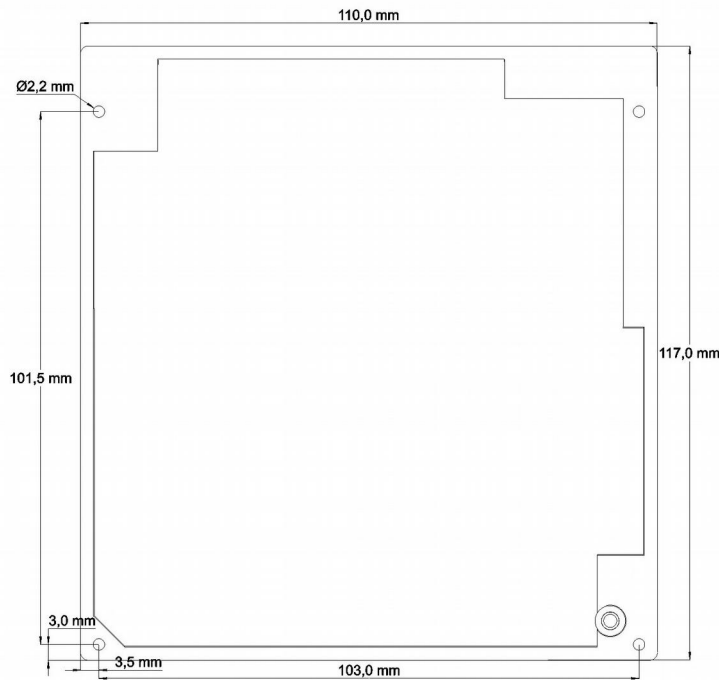
Consumables

	part number
■ Black ink ribbon	MDE-250-N
■ Purple ink ribbon	MDE-250-V
■ Standard paper roll	MPA-NO-58-50-1
■ Case DIN 144x144	B334
■ RS232C serial cable	DKM-242-V
■ USB type A / Mini-B	DK-USB-A/MINIB
■ Serial cable	DKM-258

Print head		MRSi	MRTi	MRSi	MRTi	MRSi	MRTi
		2xxx		3xxx		4xxx	
Dots/line		144		192		240	
Print speed ~ (l/s)		0,7	2,5	0,5	1,9	0,4	1,5
Paper width (mm)		58		58		58	
Print width (mm)		48		48		48	
MCBF ~ (lines)		500K	1500K	500K	1100K	500K	900K
Font IBM-II 6x10 dots (v*h)	Chars/line	24		32		40	
	Width. (mm)	2,0		1,5		1,2	
	Height. (mm)	2,6		2,6		2,6	
Font IBM-II 10x10 dots (v*h)	Chars/line	14		19		24	
	Width (mm)	3,3		2,5		2,0	
	Height (mm)	2,6		2,6		2,6	

MRSi series are mounted with economical 4 needles print head EPSON M-160.

MRTi series are mounted with high speed 8 needles M-190 EPSON. A graphic bitmap must be sent in 1 block with no stop of the print head



Order code :	M	R	x	i	-	x ₁	x ₂	x ₃	x ₄	-	x _c
Print head	←										
	4 needles: M-160 : [S]										
	8 needles: M-190 : [T]										
Dots per line	←										
	144 : [2]										
	192 : [3]										
	240 : [4]										
Housing	←										
	without : [0]										
	metal 3U without rewriter : [1]										
	metal 3U with rewriter : [2]										
	panel mount with drawer : [3]										
	black plastic 3U : [4]										
	black plastic with window : [5]										
	→ Clock Option										
	[C] : installed										
	[] : not installed										
	→ Power option										
	[1] : 5VDC										
	[2] : mains 230 VAC – 50/60 Hz										
	[3] : 9V to 40VDC										
	→ Interface										
	[1] : Serial TTL (0-5V)										
	[2] : Serial RS232C (±12V)										
	[6] : USB 2.0										
	[7] : Ethernet										
	[8] : Serial RS422										
	[9] : Modbus TCP										

