

Printer Driver Installation Guide

for Windows8/10 x64 Platform USB printer

Revision 1.0

July 2016



Contents

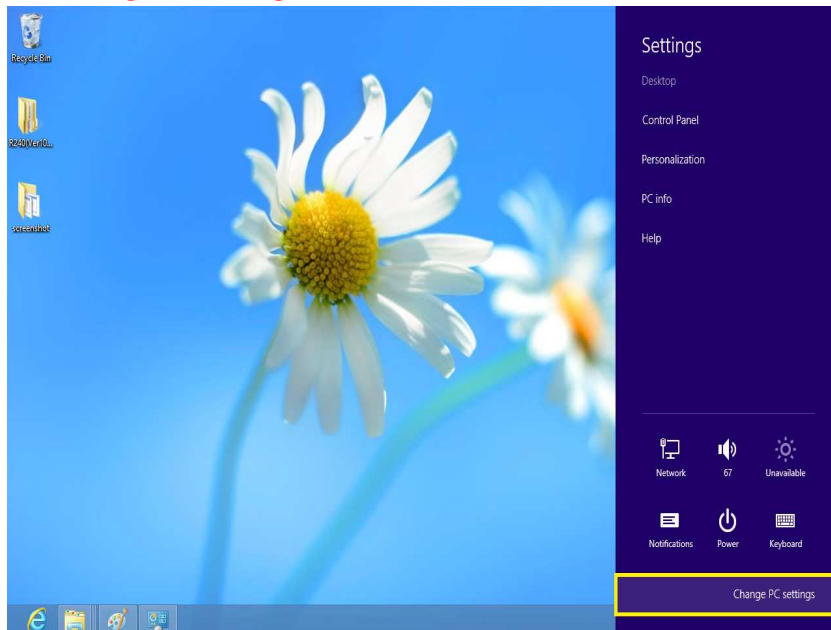
1. Windows 8.....	3
2. Windows 8.1	7
3. Windows 10.....	9

1. Windows 8

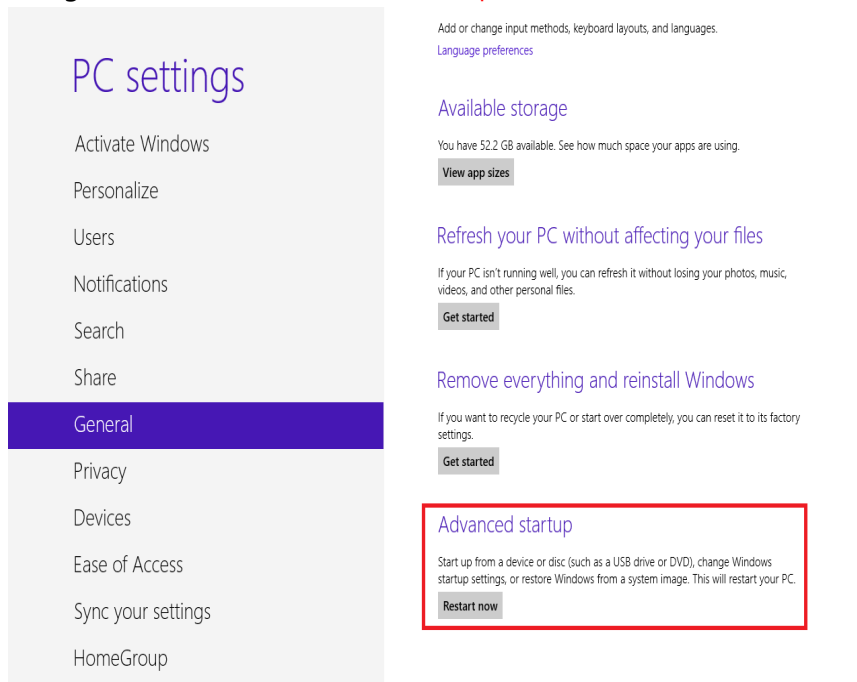
- 1) Click the [Settings] on the right side of the desktop background.



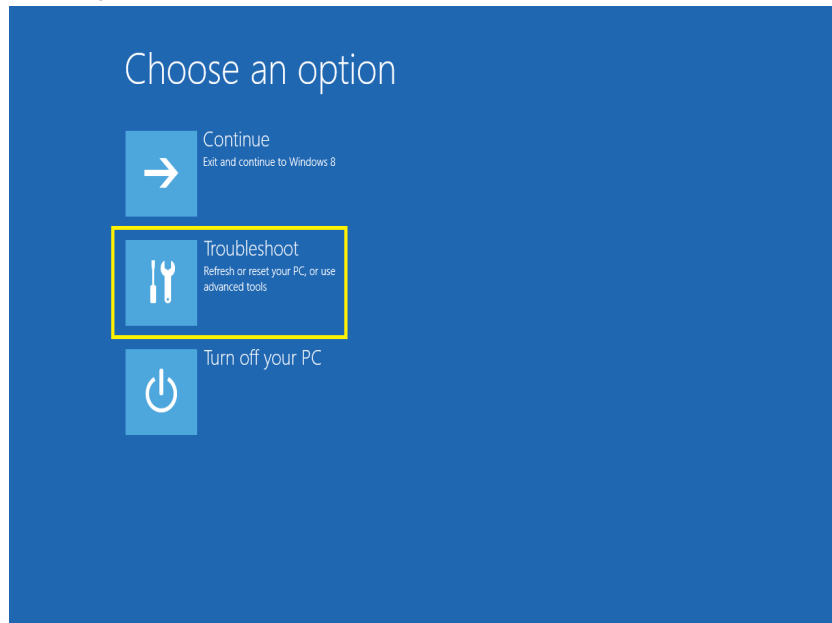
- 2) Click [Settings] – [Change PC settings].



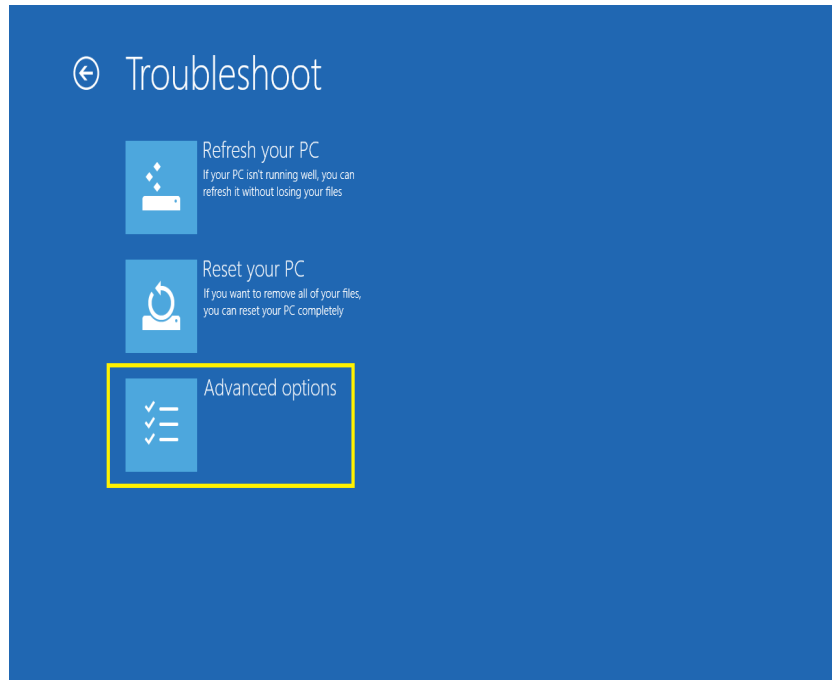
- 3) Click [PC settings] – [General] – [Advanced startup] – [Restart now].



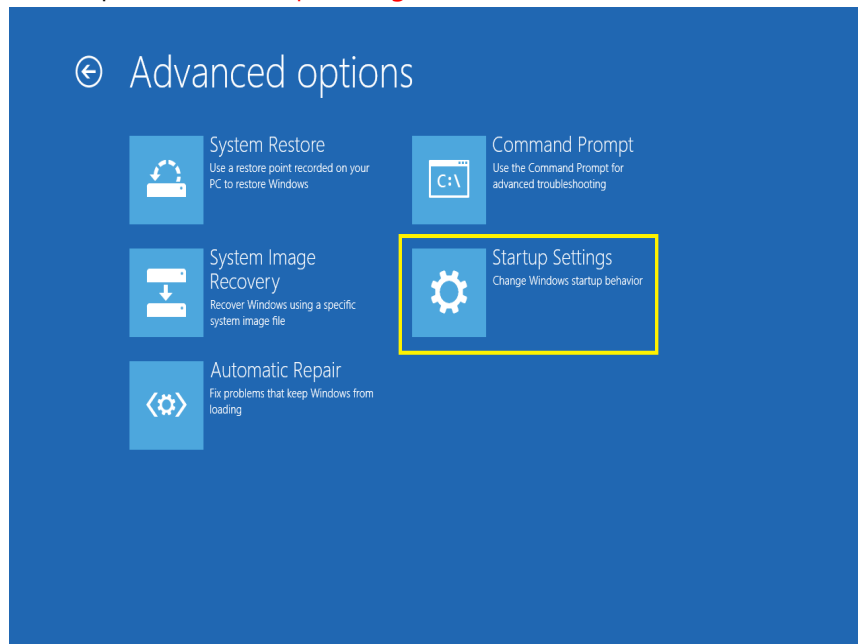
- 4) Click [Choose an option] – [Troubleshoot].



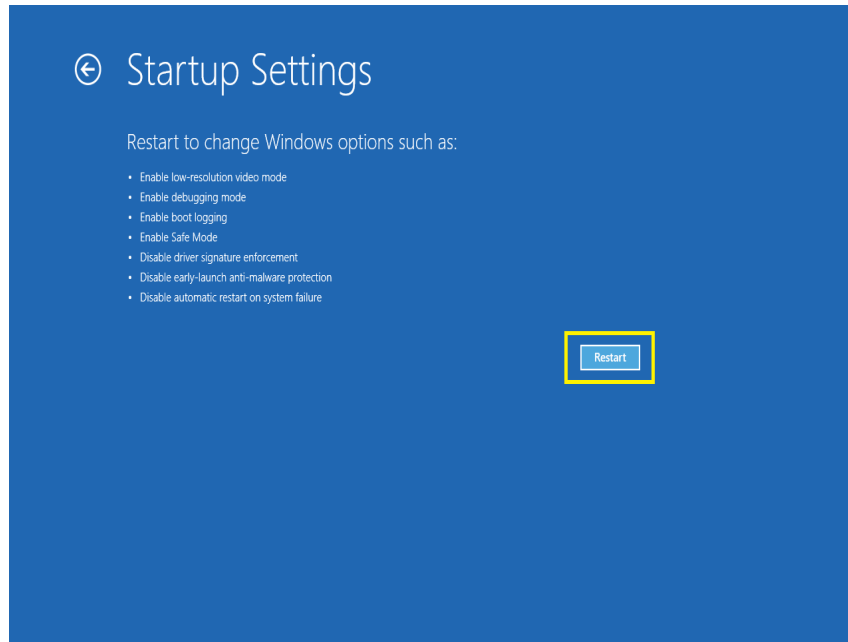
- 5) Click [Troubleshoot] – [Advanced options].



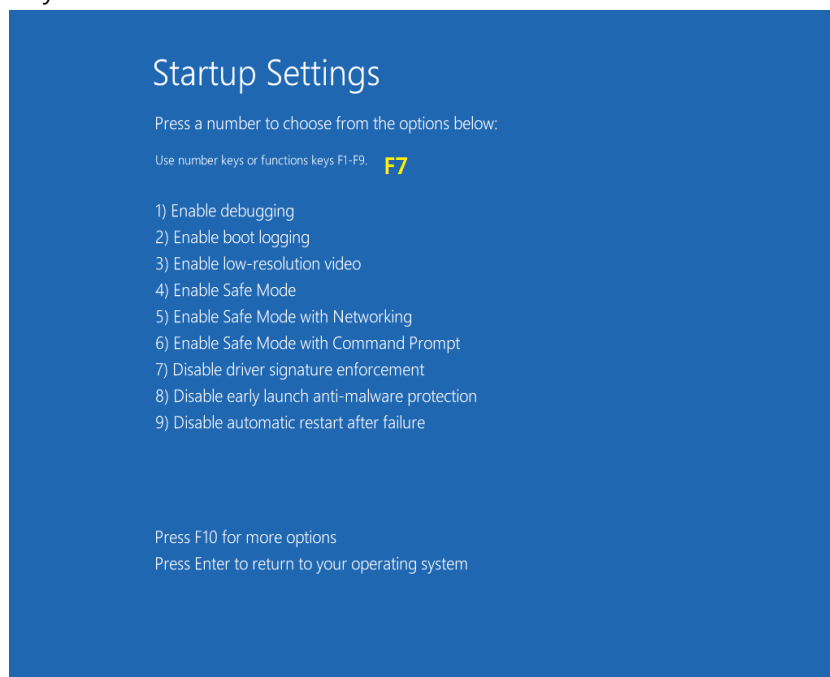
- 6) Click [Advanced options] – [Startup Settings].



7) Click [Startup Settings] – [Restart].



8) Press <F7> key.



9) Windows will reboot.

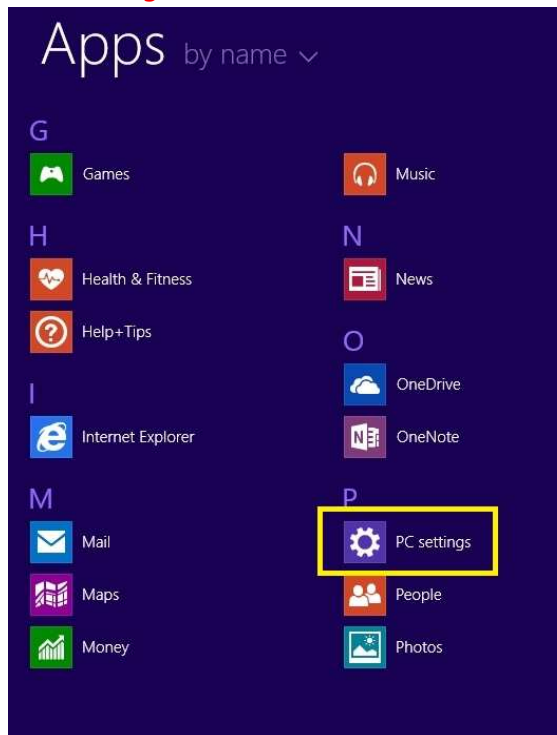
Run "Woosim WSP-XXX Printer Driver Setup" to install printer drivers.

2. Windows 8.1

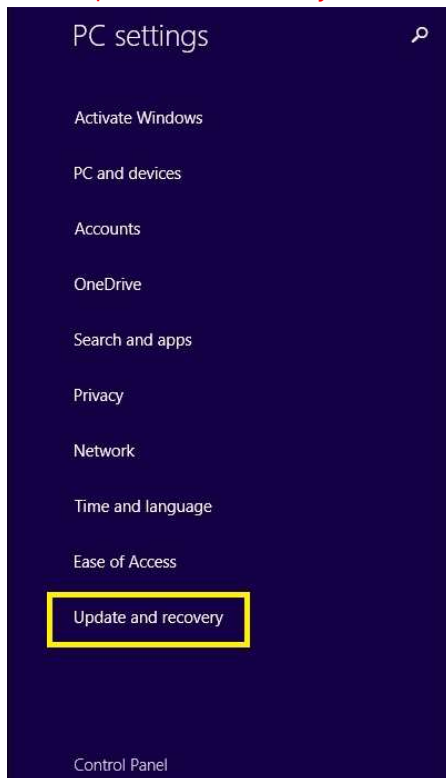
- 1) Click the [arrow] icon on the bottom of the windows background.



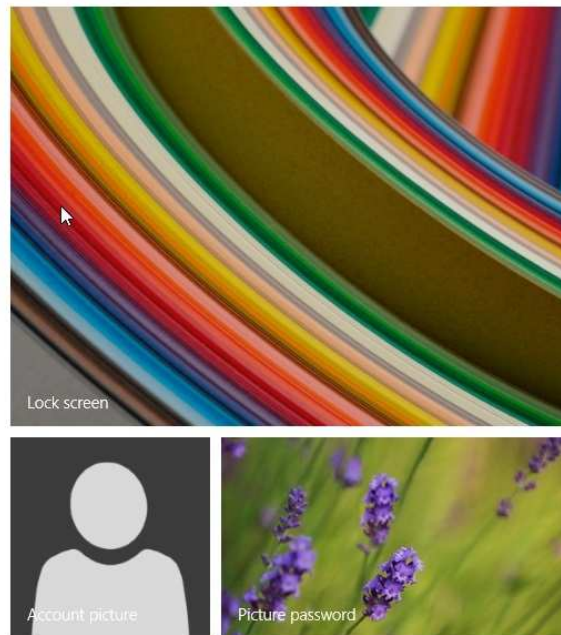
- 2) Click [Apps by name] – [PC Settings].



3) Click [Update and recovery].



Personalize



[View recently used settings](#)

4) Click [Recovery] – [Advanced startup] – [Restart now].



Refresh your PC without affecting your files

If your PC isn't running well, you can refresh it without losing your photos, music, videos, and other personal files.

[Get started](#)

Remove everything and reinstall Windows

If you want to recycle your PC or start over completely, you can reset it to its factory settings.

[Get started](#)

Advanced startup

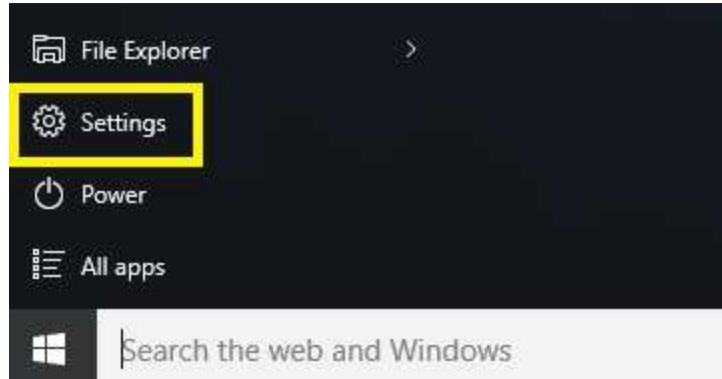
Start up from a device or disc (such as a USB drive or DVD), change Windows startup settings, or restore Windows from a system image. This will restart your PC.

[Restart now](#)

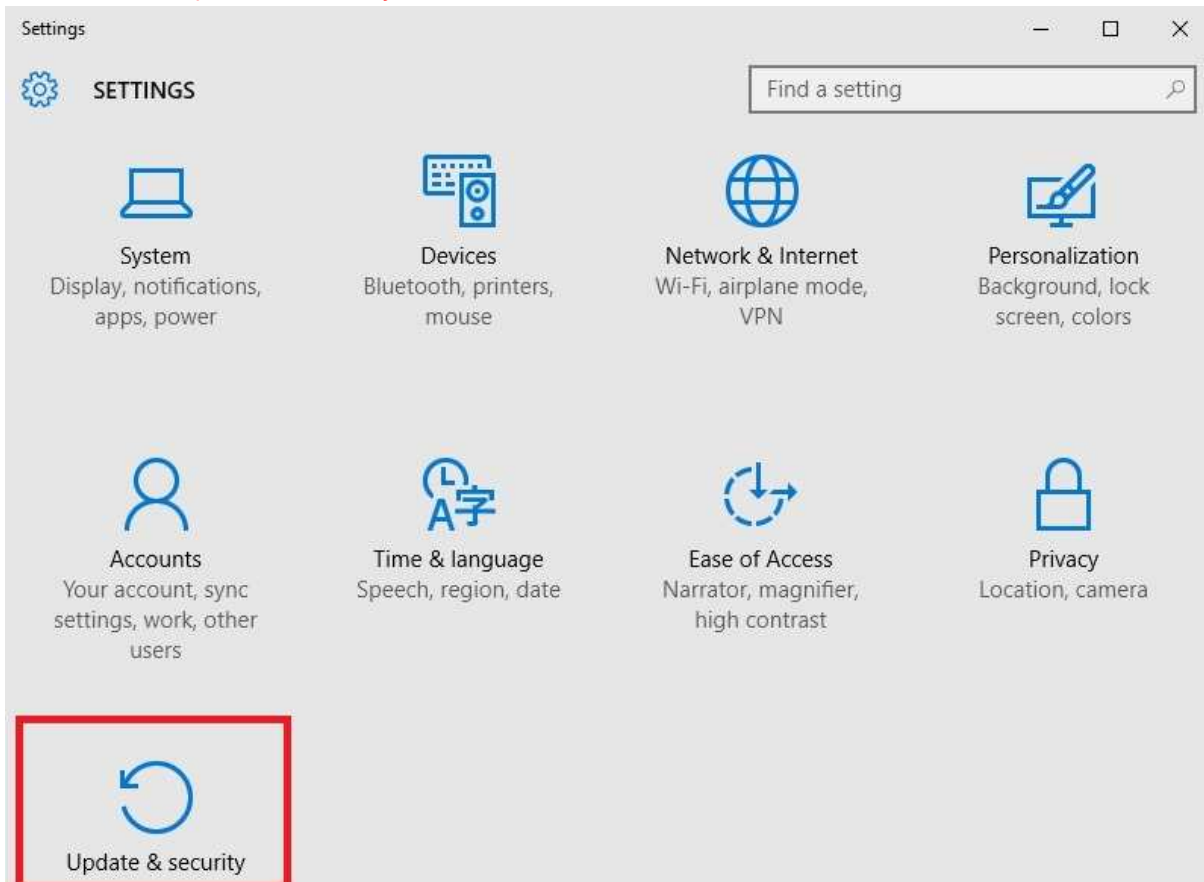
5) Next steps are same as Windows8 case.

3. Windows 10

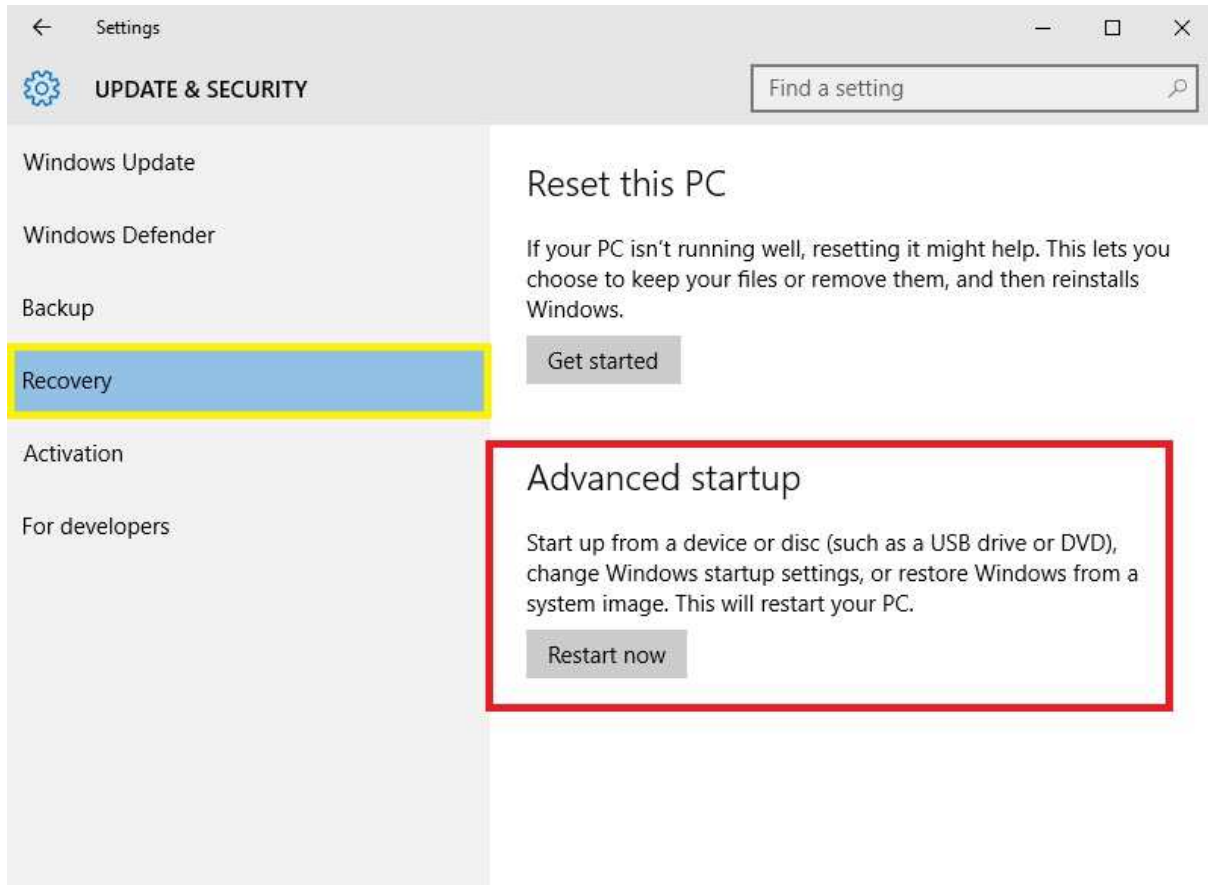
- 1) Click the [Window] icon – [Settings].



- 2) Click [Update & security].



3) Click [Recovery] – [Advanced startup] – [Restart now].



4) Next steps are same as Windows8 case.